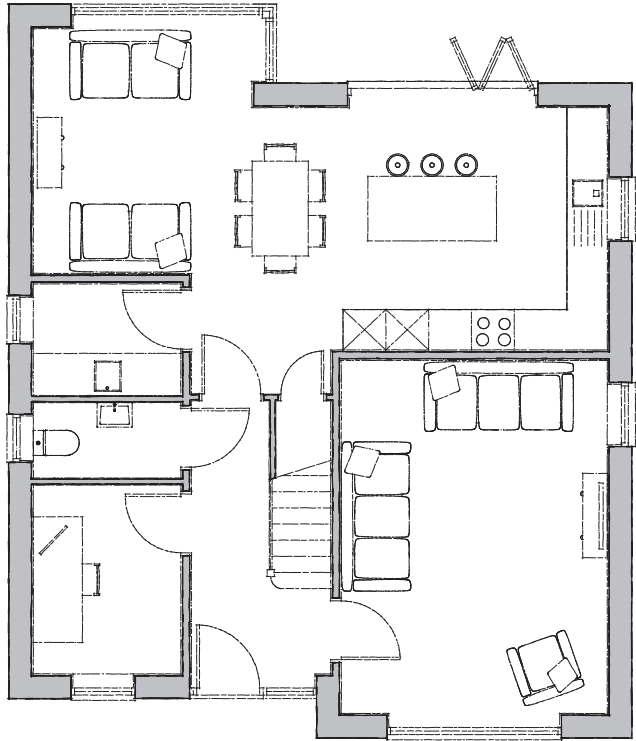


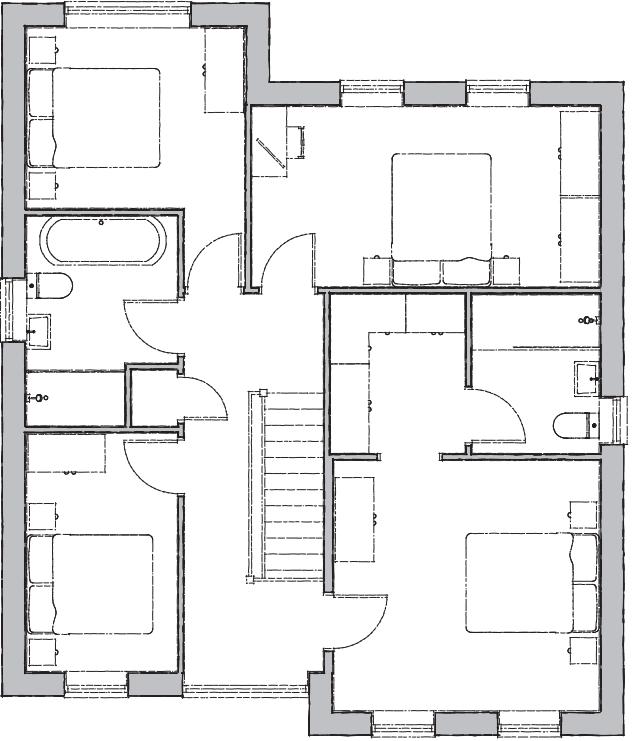


Plots 1, 7, 19, 53



**Ground Floor**

- Kitchen/Day Room**  
8100mm x 3400mm 26' 6" x 11' 11"
- Utility**  
2050mm x 1500mm 6' 8" x 4' 11"
- Lounge**  
5000mm x 3750mm 16' 4" x 12' 3"
- Study**  
2650mm x 2050mm 8' 8" x 6' 8"
- WC**  
2050mm x 1050mm 6' 8" x 3' 5"
- Garage**  
6000mm x 5550mm 19' 8" x 18' 2"



**First Floor**

- Bedroom 1**  
3750mm x 3525mm 12' 3" x 11' 6"
- Dressing Room**  
2200mm X 1900mm 7' 2" x 6' 2"
- Ensuite**  
2200mm x 1750mm 7' 2" x 5' 8"
- Bedroom 2**  
4900mm x 2525mm 16' 0" x 8' 3"
- Bedroom 3**  
3100mm x 2525mm 10' 2" x 8' 3"
- Bedroom 4**  
3350mm x 2100mm 10' 11" x 6' 10"
- Bathroom**  
2950mm x 2100mm 9' 8" x 6' 10"

*Wassand*

The Wassand is a luxurious and aspirational four-bedroom house with unmistakable charm.

Space and light are a hallmark feature of this property, as featured in the generous open-plan kitchen/day room with bi-folding doors leading out to the garden. Other design-led features of the property include a curtain walling entrance and a central hallway leading to a substantial living room and study. It also benefits from a linked cloakroom, utility room, and double garage.

The first floor boasts a master bedroom and stunning en-suite with dressing room, and a further three bedrooms share a centrally featured landing with a separate family bathroom which includes both shower and separate bathtub.