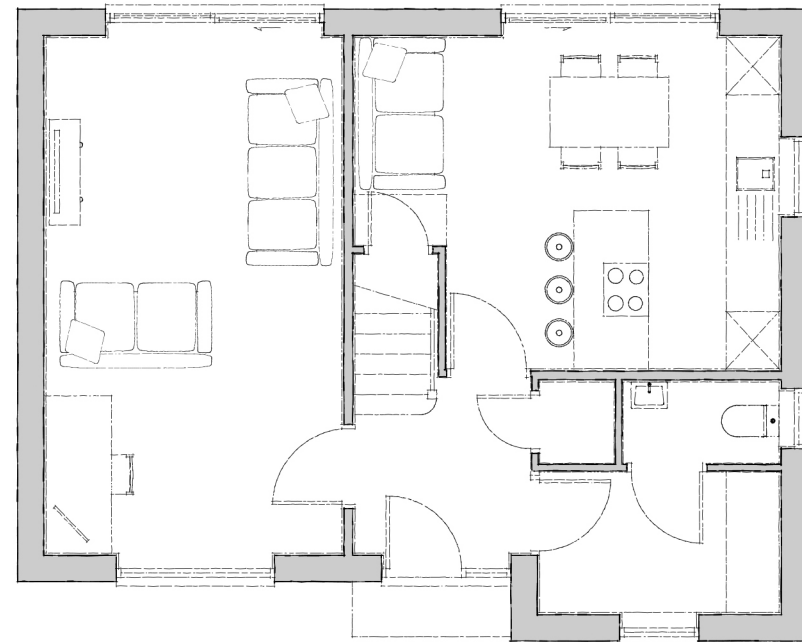




Plots 6, 8, 23
(See Pages 6 & 7)

Tindall

The Tindall is a three-bedroom house with an abundance of personality and kerb appeal. A carefully designed ground floor provides a welcoming entrance hall and larger-than-average kitchen/diner with sliding doors. Off the hall is a dual-aspect lounge and linked utility with cloakroom. The first floor boasts a sweeping landing with a centre window, master bedroom and en-suite with feature windows. There are two additional bedrooms and a large family bathroom making this an impeccably designed home.



GROUND FLOOR

Kitchen/Day Room

4800mm x 3750mm 15' 8" x 12' 3"

Utility

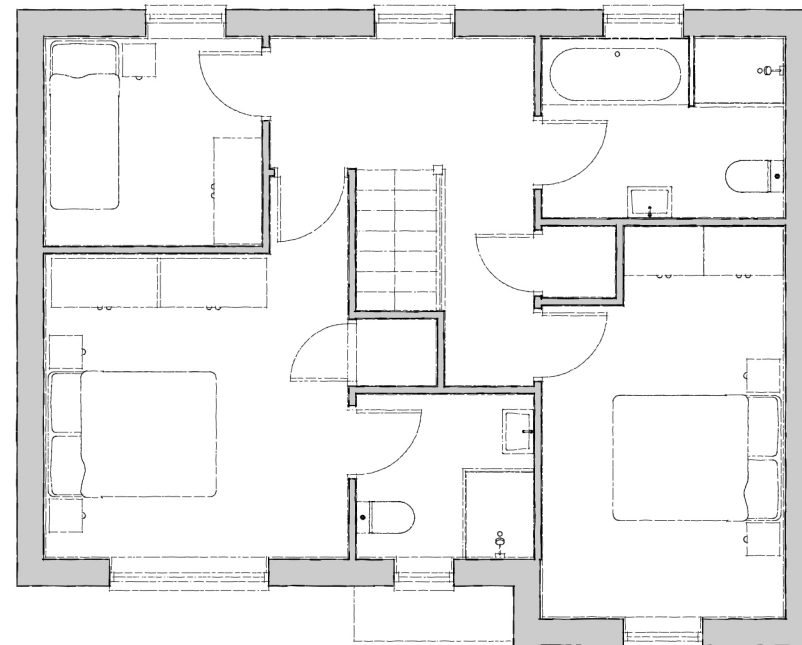
2700mm x 1575mm 8' 10" x 5' 2"

Lounge

5850mm x 3350mm 19' 2" x 10' 11"

WC

1800mm x 900mm 5' 10" x 2' 11"



FIRST FLOOR

Bedroom 1

3400mm x 3400mm 11' 1" x 11' 1"

Ensuite

1950mm x 1800mm 6' 6" x 5' 10"

Bedroom 2

4500mm x 2700mm 14' 7" x 8' 10"

Bedroom 3

2400mm x 2300mm 7' 10" x 7' 6"

Bathroom

2700mm x 1950mm 8' 10" x 6' 4"