



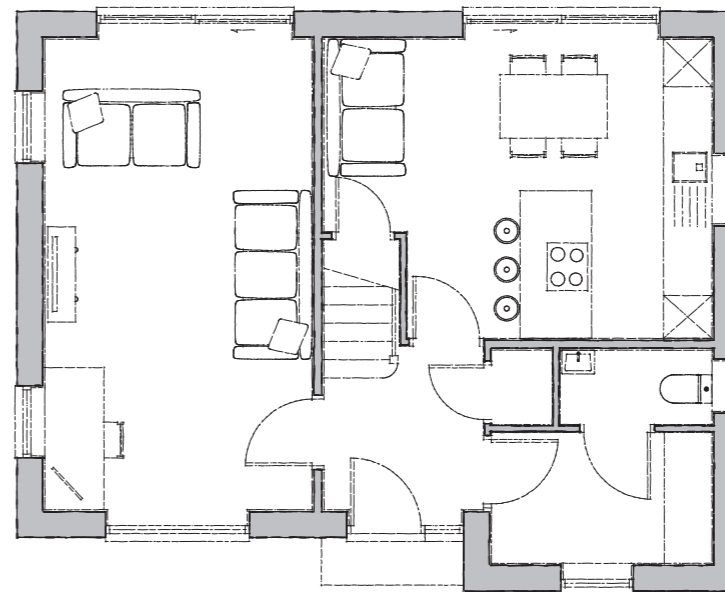
Plots 5, 18, 51-52

Tindall

The Tindall is a three-bedroom house with an abundance of personality and kerb appeal.

A carefully designed ground floor provides a welcoming entrance hall and larger-than-average kitchen/diner with sliding doors. Off the hall is a dual-aspect lounge and linked utility with cloakroom.

The first floor boasts a sweeping landing with a central window and a master bedroom with en-suite with feature windows. There are two additional bedrooms and a large bathroom making this an impeccably spacious family home.



Ground Floor

Kitchen/Day Room

4850mm x 3750mm 15' 10" x 12' 3"

Utility

2725mm x 1600mm 8' 11" x 5' 2"

Lounge

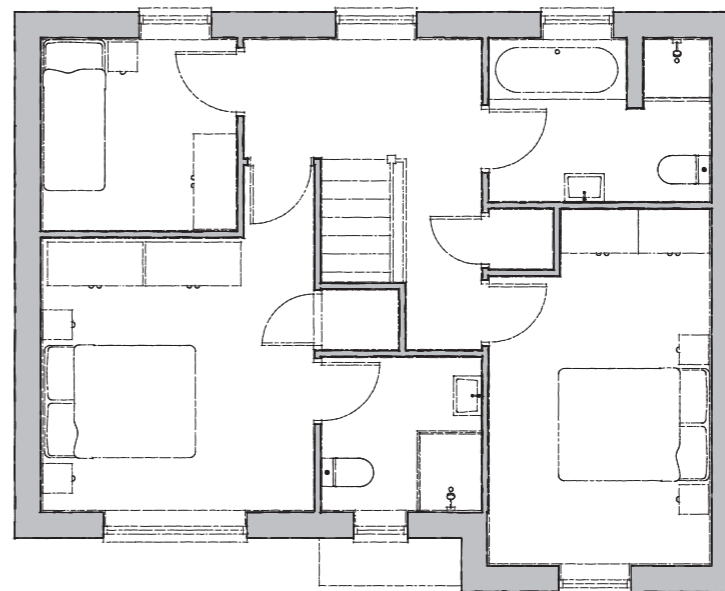
5900mm x 3325mm 19' 4" x 10' 10"

WC

1875mm x 900mm 6' 1" x 2' 11"

Garage

6000mm x 3000mm 19' 8" x 9' 10"



First Floor

Bedroom 1

3400mm x 3400mm 11' 11" x 11' 11"

Ensuite

1975mm x 1900mm 6' 5" x 6' 2"

Bedroom 2

3600mm x 2750mm 11' 9" x 9' 0"

Bedroom 3

2400mm x 2375mm 7' 10" x 7' 9"

Bathroom

2750mm x 2000mm 9' 0" x 6' 6"