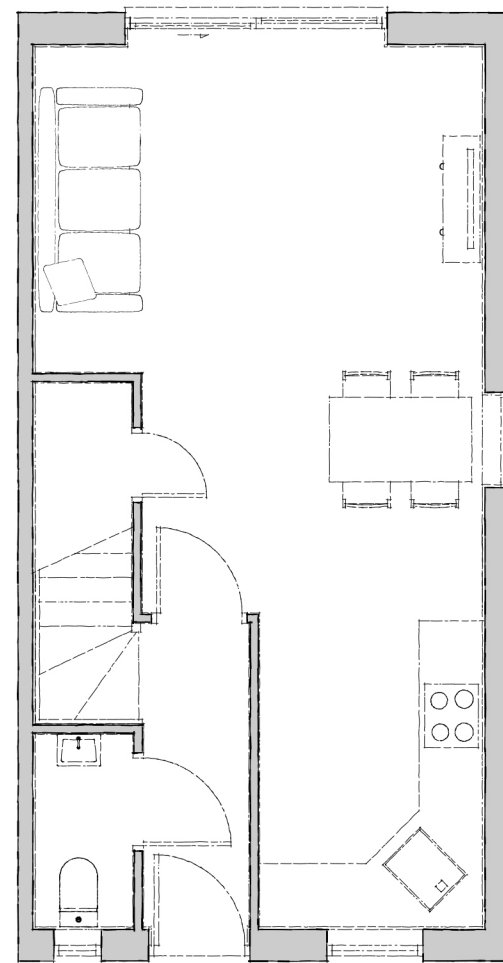




Mellor

● **Plots 1-3, 15-16**
(See Pages 6 & 7)

The Mellor is an attractive two-bedroom terraced house. You'll find a well-appointed ground floor consisting of kitchen, with ample dining space, and on into the lounge where the sliding doors become the main focal point. The house flows effortlessly from one room to the next and situated off the hallway entrance is the convenient ground floor WC. Upstairs you'll find a family bathroom and two well-coordinated generous double bedrooms. This is a home that intelligently maximizes all the space available.



*Please note - Right side window relates to plot 1 only.

GROUND FLOOR

Kitchen/Day Room

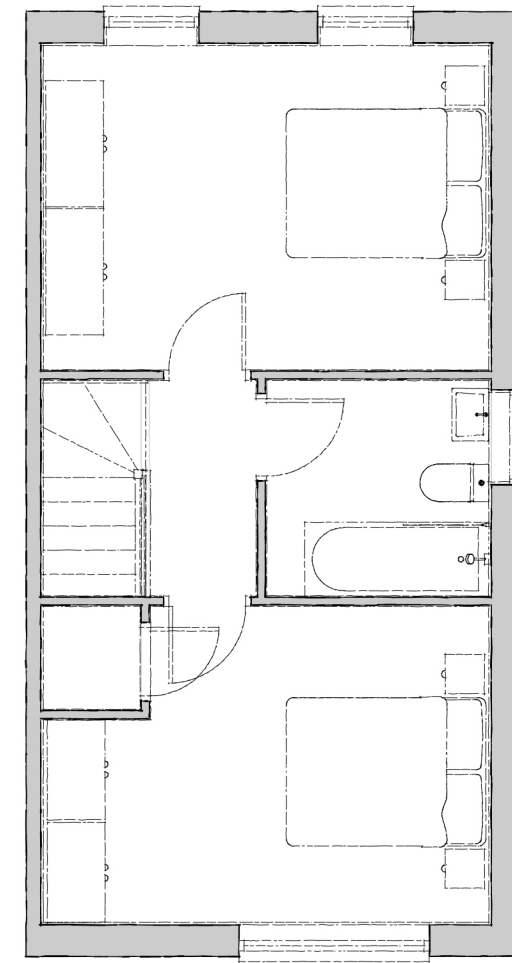
5250mm x 3200mm 17' 2" x 10' 5"

Lounge

4200mm x 3050mm 13' 9" x 10' 0"

WC

1800mm x 875mm 5' 10" x 2' 10"



FIRST FLOOR

Bedroom 1

4200mm x 3050mm 13' 9" x 10' 0"

Bedroom 2

4200mm x 2975mm 13' 9" x 9' 9"

Bathroom

2050mm x 2050mm 6' 8" x 6' 8"