

Plots 34-38, 43-50

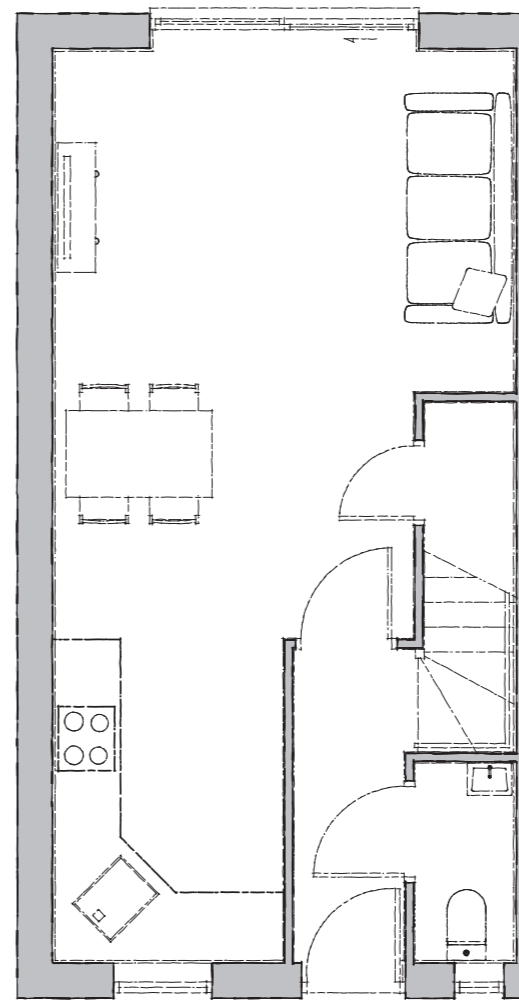


Mellor

The Mellor is an attractive two-bedroom terraced house, designed for modern living.

Inside, you'll find a layout that intelligently maximises all available space. The well-appointed ground floor consists of a modern kitchen with ample dining space, lounge with contemporary sliding doors, and a convenient ground floor WC.

Upstairs you'll find two well-coordinated and generously-sized double bedrooms and a family bathroom.



Ground Floor

Kitchen/Day Room

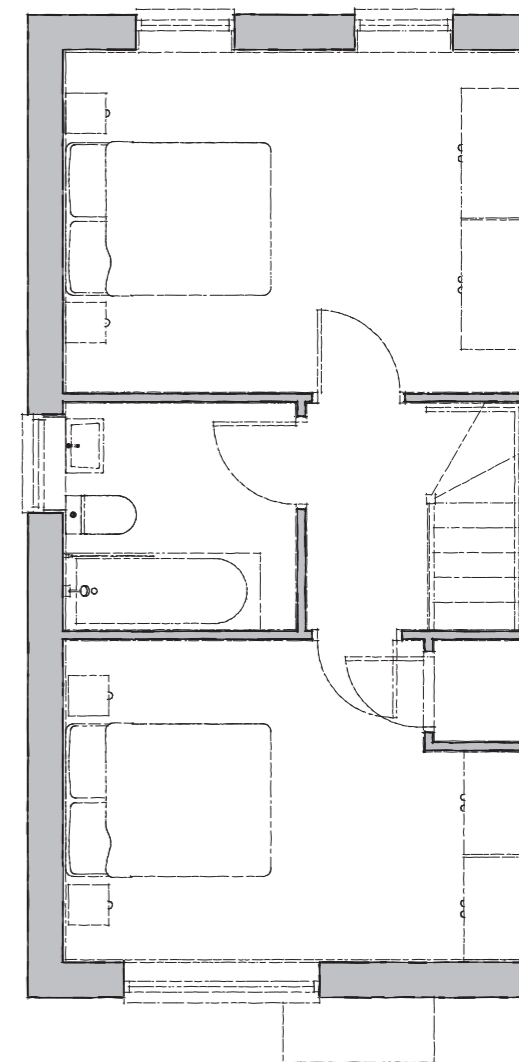
5200mm x 3300mm 17' 0" x 10' 9"

Lounge

4200mm x 3125mm 13' 9" x 10' 3"

WC

1800mm x 850mm 5' 10" x 2' 9"



First Floor

Bedroom 1

4200mm x 3100mm 13' 9" x 10' 2"

Bedroom 2

4200mm x 2900mm 13' 9" x 9' 6"

Bathroom

2100mm x 2050mm 6' 10" x 6' 8"