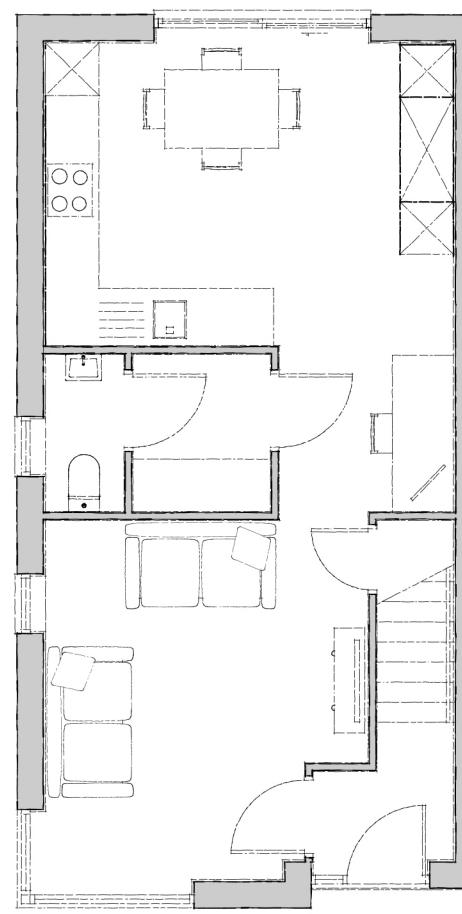




Hockney

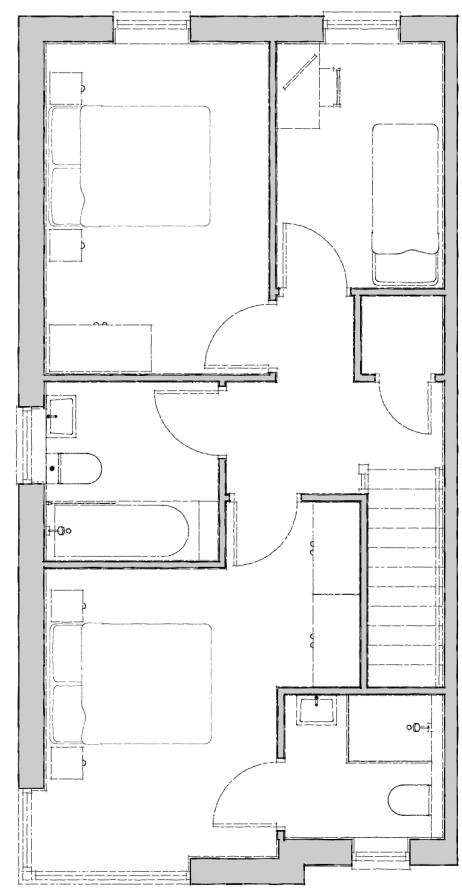
Plots 11-12, 18-19, 20-21
(See Pages 6 & 7)

The Hockney is a characterful semi-detached house with three bedrooms and distinctive features. Equipped for modern living, the downstairs provides a free-flowing open plan layout which runs from the living room into the well-utilized kitchen area with sliding doors and centralised utility and cloakroom attached. The first floor consists of a master bedroom with en-suite, a further two bedrooms and family bathroom lead off the landing. This house really makes economical use of its space.



GROUND FLOOR

- Kitchen/Day Room
4650mm x 3425mm 15' 3" x 11' 2"
- Utility
1750mm x 1550mm 5' 8" x 5' 1"
- Lounge
4075mm x 3650mm 13' 4" x 11' 11"
- Study
1950mm x 1750mm 6' 4" x 5' 8"
- WC
1750mm x 875mm 5' 8" X 2' 10"



FIRST FLOOR

- Bedroom 1
3350mm x 2675mm 10' 11" x 8' 9"
- Ensuite
1700mm x 1800mm 5' 6" x 5' 10"
- Bedroom 2
3850mm x 2575mm 12' 7" x 8' 5"
- Bedroom 3
2825mm x 1900mm 9' 3" x 6' 2"
- Bathroom
2100mm x 2000mm 6' 10" x 6' 6"