

Plots 9-10, 22-23, 32-33

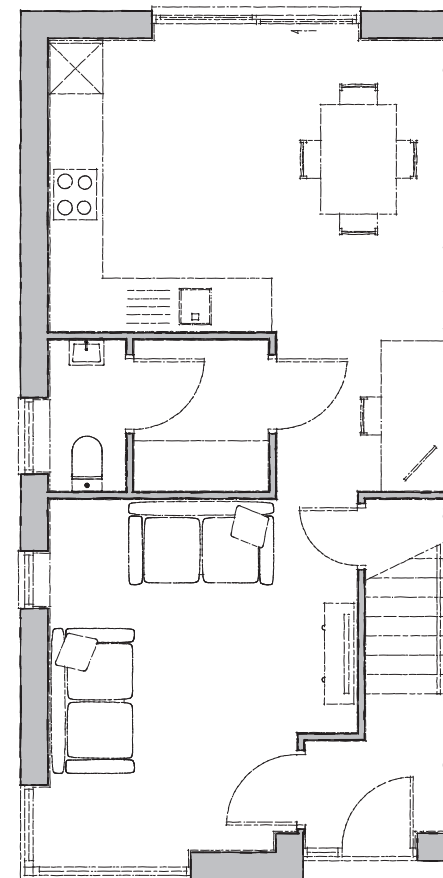


Hockney

The Hockney is a characterful three-bedroom semi-detached house with distinctive features and an economical use of space.

Equipped for modern living, the downstairs provides a free-flowing open plan layout, which runs from the living room into the kitchen area with sliding doors, and a centralised utility and cloakroom attached.

The first floor consists of a master bedroom with an en-suite, a further two bedrooms and a family bathroom leading off the landing.



Ground Floor

Kitchen/Day Room

4650mm x 3450mm 15' 3" x 11' 3"

Utility

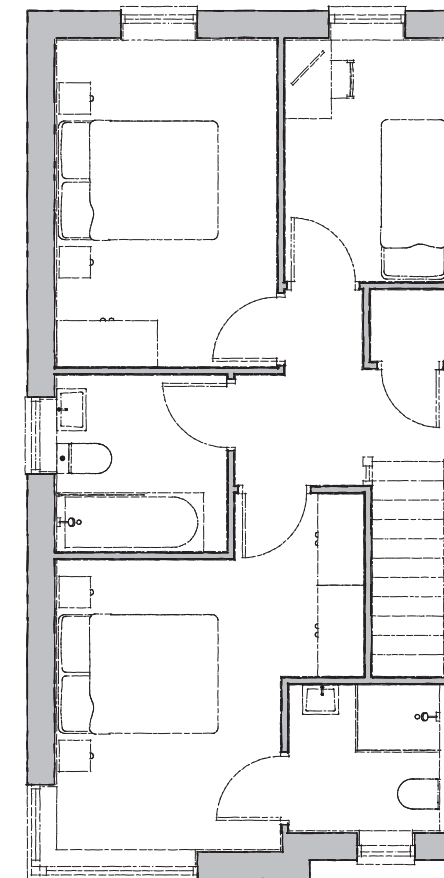
1750mm x 1625mm 5' 8" x 5' 3"

Lounge

4125mm x 3625mm 13' 6" x 11' 10"

WC

850mm x 1750mm 2' 9" x 5' 8"



First Floor

Bedroom 1

3400mm x 2650mm 11' 1" x 8' 8"

Ensuite

1800mm x 1750mm 5' 10" x 5' 8"

Bedroom 2

3850mm x 2600mm 12' 7" x 8' 6"

Bedroom 3

2850mm x 1950mm 9' 4" x 6' 4"

Bathroom

2050mm x 2000mm 6' 8" x 6' 6"