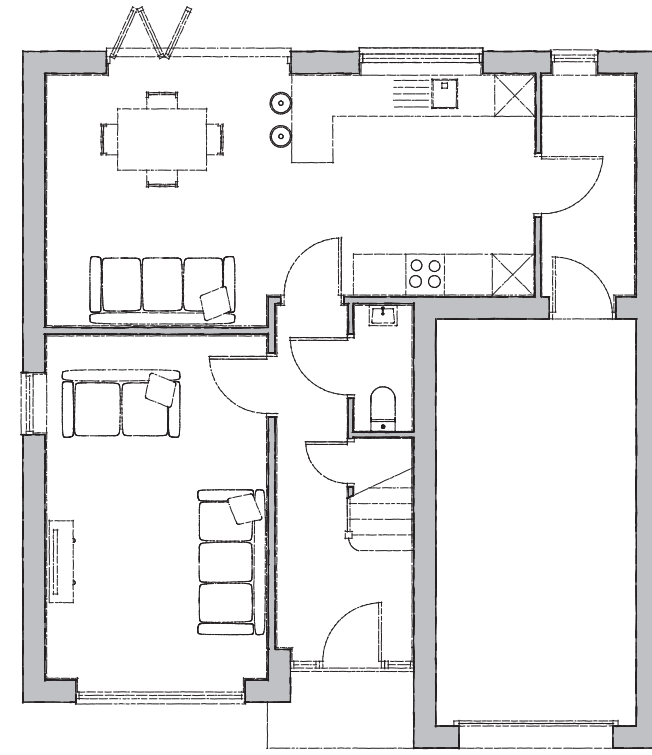


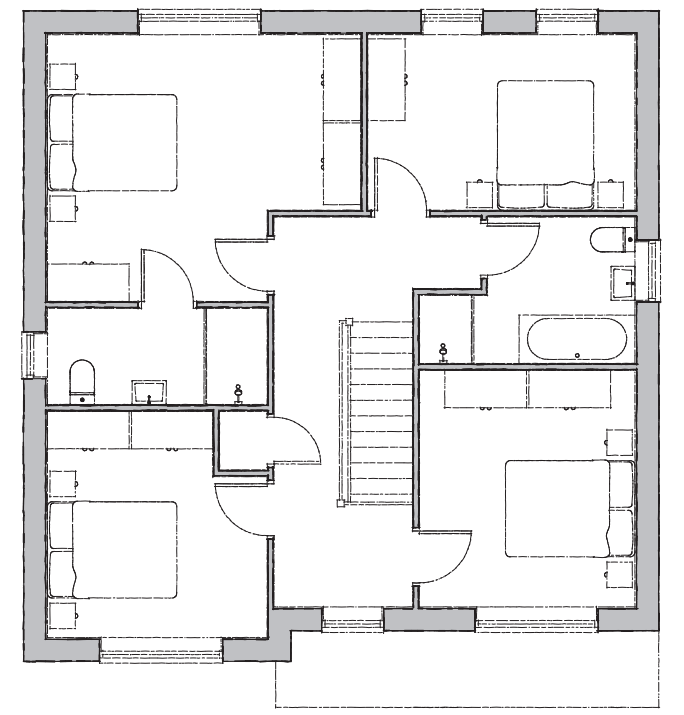


Plots 2, 8, 13-14, 57-58



Ground Floor

- Kitchen/Day Room**
7100mm x 3625mm 23' 4" x 13' 11"
- Utility**
3200mm x 1300mm 11' 11" x 4' 3"
- Lounge**
4950mm x 3200mm 16' 2" x 10' 2"
- WC**
1800mm x 850mm 5' 10" x 2' 9"
- Garage**
6000mm x 2950mm 19' 8" x 9' 8"



First Floor

- Bedroom 1**
4550mm x 3850mm 14' 11" x 12' 7"
- Ensuite**
3200mm x 1350mm 10' 5" x 4' 0"
- Bedroom 2**
3400mm x 3100mm 11' 0" x 10' 2"
- Bedroom 3**
3250mm x 3150mm 10' 7" x 10' 4"
- Bedroom 4**
3850mm x 2500mm 12' 7" x 8' 2"
- Bathroom**
2100mm x 2100mm 6' 10" x 6' 10"

Fielding

The Fielding is an impressive and sophisticated four-bedroom house with prominent features.

Downstairs, the open-plan kitchen/day room span the entire length of the property with bi-folding doors leading out into the garden. Through a linked passage is a practical utility and internal single garage, and from the central hallway is a separate front-aspect living room and cloakroom.

The first floor incorporates an impressive master bedroom and en-suite with dressing area, and accessed from the gallery landing are three further double bedrooms and a separate family bathroom.