



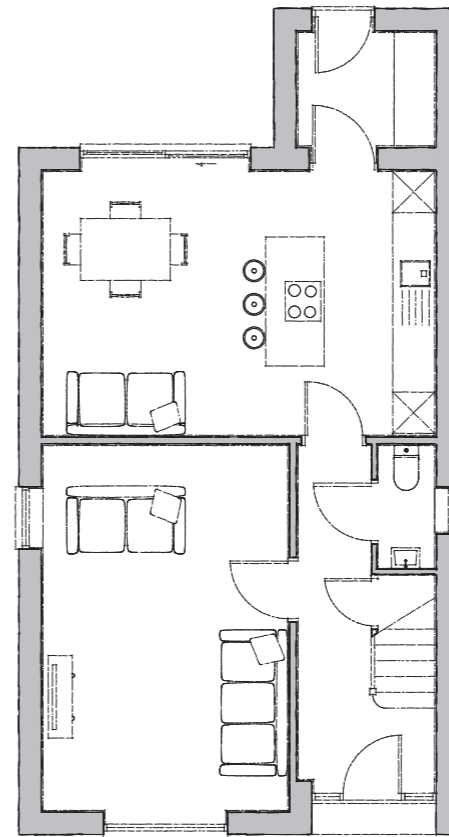
Plots 4, 6, 11, 15, 24, 31, 54-55

Elwell

The Elwell is an elegant three-bedroom house which stands out for its clean architectural lines.

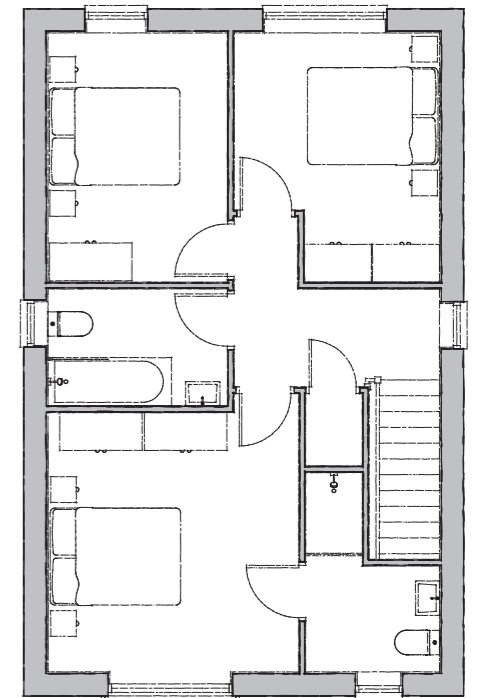
The well-designed ground floor enjoys an open plan kitchen and day room with sliding doors, as well as a linked utility room, while a spacious living room and cloakroom connect from the hall.

The first floor has a carefully crafted master bedroom and the en-suite features a glazed balcony providing admirable views. Two further bedrooms and a family bathroom complete the outstanding combination of design and functionality.



Ground Floor

- Kitchen/Day Room**
5650mm x 3800mm 18' 6" x 12' 5"
- Utility**
1950mm x 1600mm 6' 4" x 5' 2"
- Lounge**
5250mm x 3450mm 17' 2" x 11' 3"
- WC**
1750mm x 850mm 5' 8" x 2' 9"
- Garage**
6000mm x 3000mm 19' 8" x 9' 10"



First Floor

- Bedroom 1**
3700mm x 3700mm 12' 1" x 12' 1"
- Ensuite**
1850mm x 1500mm 6' 0" x 4' 11"
- Bedroom 2**
3600mm x 2950mm 11' 9" x 9' 8"
- Bedroom 3**
3575mm x 2575mm 11' 8" x 8' 5"
- Bathroom**
2550mm x 1650mm 8' 4" x 5' 4"