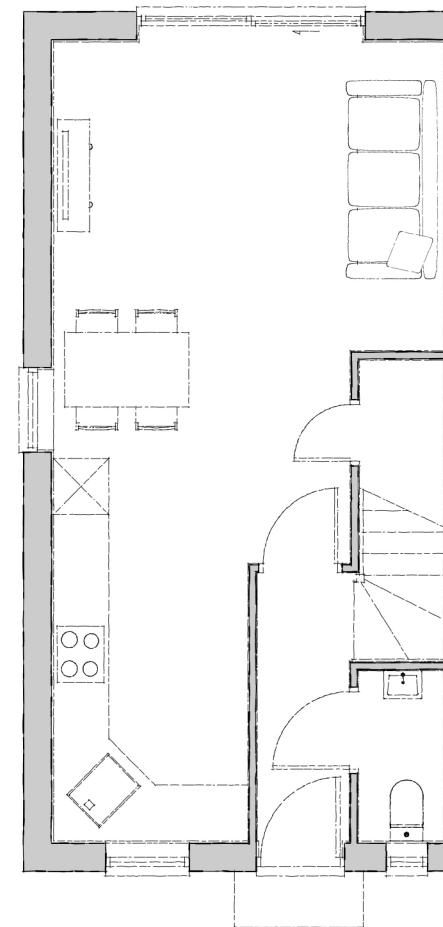




Elmhirst

Plots 4-5
(See Pages 6 & 7)

The Elmhirst has all the characteristics and hallmarks of the Mellor, but is a more generous three-bedroom house. You'll find a well-appointed ground floor consisting of kitchen with ample dining space, through into the lounge where the sliding doors become the main focal point, the house flows effortlessly from one room to the next. There is also a convenient ground floor WC located off the hallway entrance. Upstairs you'll find a family bathroom and three further bedrooms, resulting in a very neat and compact property.



GROUND FLOOR

Kitchen/Day Room

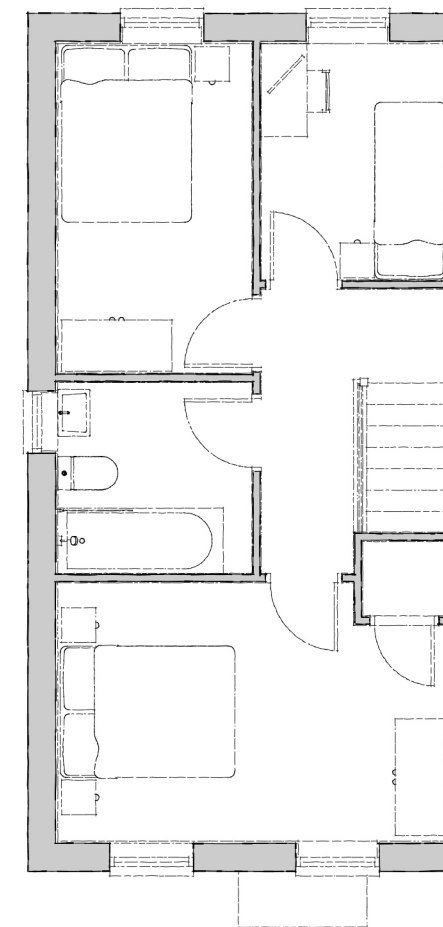
5250mm x 3200mm 17' 2" x 10' 5"

Lounge

4200mm x 3275mm 13' 9" x 10' 8"

WC

1800mm x 875mm 5' 10" x 2' 10"



FIRST FLOOR

Bedroom 1

4200mm x 2750mm 13' 9" x 9' 0"

Bedroom 2

3500mm x 2075mm 11' 5" x 6' 9"

Bedroom 3

2500mm x 1975mm 8' 2" x 6' 5"

Bathroom

2050mm x 2050mm 6' 8" x 6' 8"