



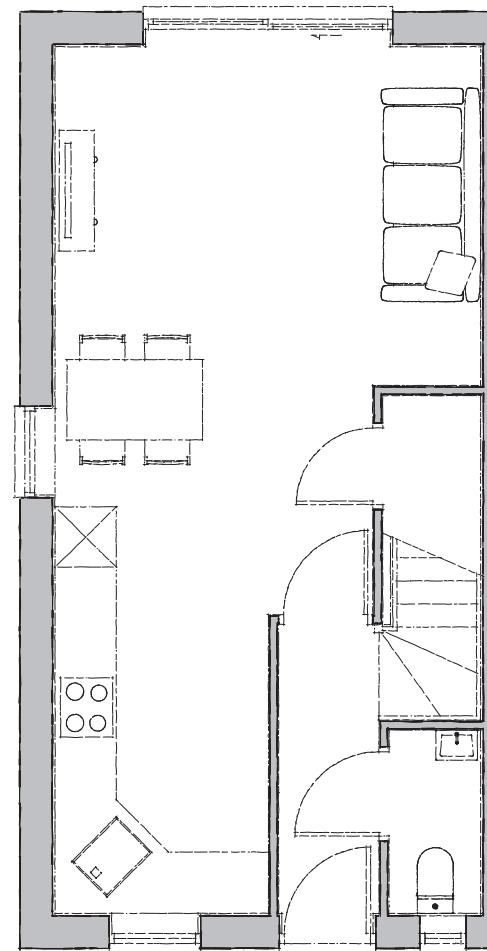
Plots 16-17, 25-28, 59-60

Elmhirst

With all the characteristics and hallmarks of the Mellor property, The Elmhirst is a more generous three-bedroom house.

Inside, you'll find a well-appointed ground floor consisting of kitchen with ample dining space, lounge with contemporary sliding doors, and a convenient ground floor WC located off the hallway entrance.

Upstairs you'll find three generous bedrooms, and a family bathroom - resulting in a very neat and compact property.



Ground Floor

Kitchen/Day Room

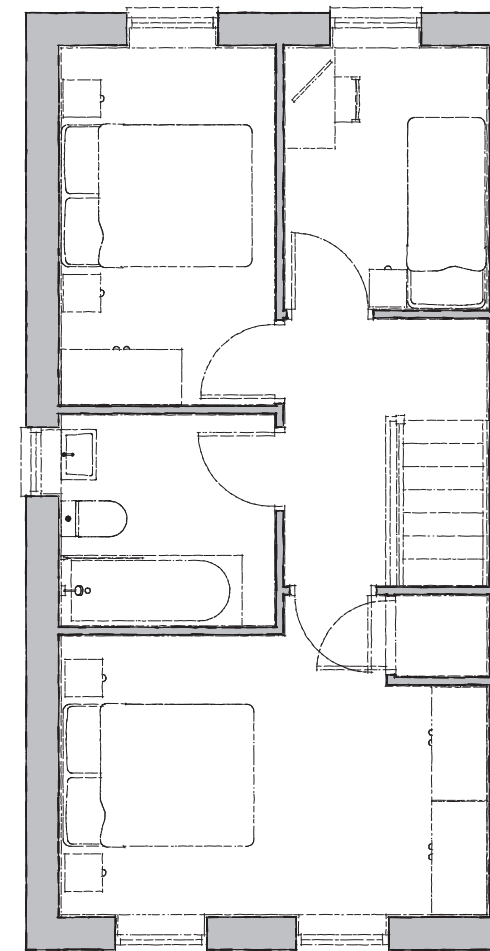
5200mm x 3100mm 17' 0" x 10' 2"

Lounge

4200mm x 3350mm 13' 9" x 10' 11"

WC

850mm x 1800mm 2' 9" x 5' 10"



First Floor

Bedroom 1

4200mm x 2750mm 13' 9" x 9' 0"

Bedroom 2

3500mm x 2100mm 11' 5" x 6'10"

Bedroom 3

2550mm x 2000mm 8' 4" x 6'6"

Bathroom

2100mm x 2050mm 6' 10" x 6' 8"