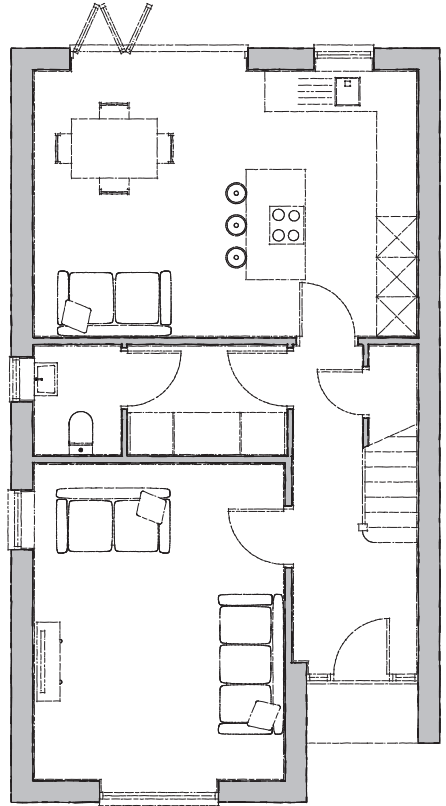


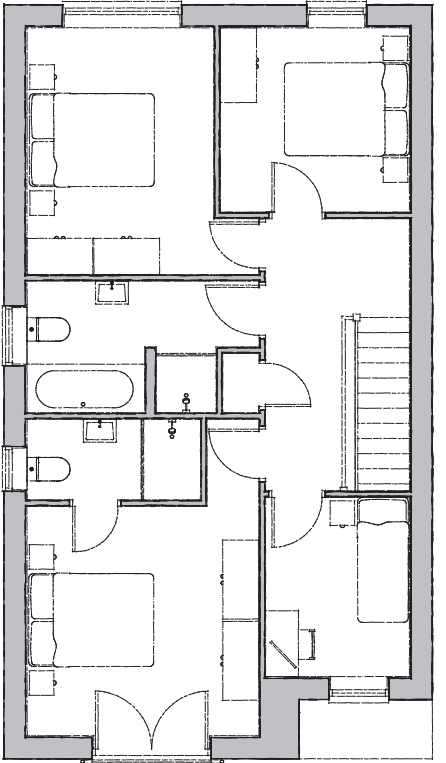


Plots 3, 12, 20-21, 29-30, 56



Ground Floor

- Kitchen/Day Room**
5775mm x 4000mm 18' 11" x 13' 1"
- Utility**
2400mm x 1600mm 7' 10" x 5' 2"
- Lounge**
4750mm x 3750mm 15' 7" x 12' 3"
- WC**
1600mm x 1300mm 5' 2" x 4' 3"
- Garage**
6000mm x 3000mm 19' 8" x 9' 10"



First Floor

- Bedroom 1**
3500mm x 3450mm 11' 5" x 11' 3"
- Ensuite**
2600mm x 1150mm 8' 6" x 3' 9"
- Bedroom 2**
3700mm x 2800mm 12' 1" x 9' 2"
- Bedroom 3**
2850mm x 2750mm 9' 4" x 9' 0"
- Bedroom 4**
2700mm x 2150mm 8' 10" x 7' 0"
- Bathroom**
3500mm x 1950mm 11' 5" x 6' 4"

Asquith

The Asquith is an immaculately designed and well-proportioned four-bedroom house.

Encompassed within the ground floor is a modern, open-plan kitchen and day room with bi-folding doors leading out to the garden. Centrally off the hallway is an impressive lounge, spacious utility, and cloakroom.

The first floor is generous in size with a master bedroom and ensuite featuring French doors and a glazed balcony. There are three more additional, ample-sized bedrooms, and a family bathroom radiating in modern elegance.